

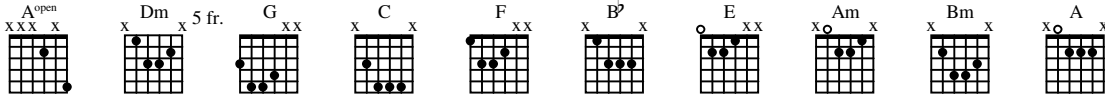
ATAKA MERTVETZOV

As recorded by Aria

(From the 2014 Album CHEREZ VSE VREMENA)

Transcribed by Little Prince

Words by Margarita Pushkina
Music by Vitaly Dubinin



A Intro

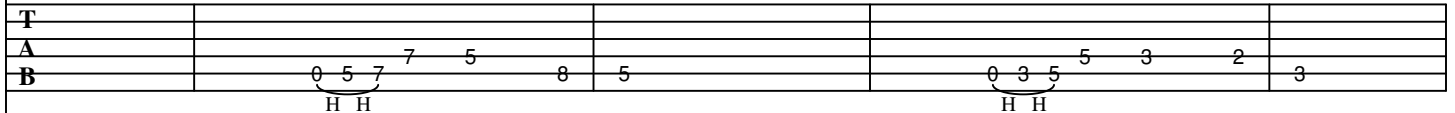
Moderately Slow ♩ = 100

A open Dm
Gtr V (synthesizer arranged for gtr)

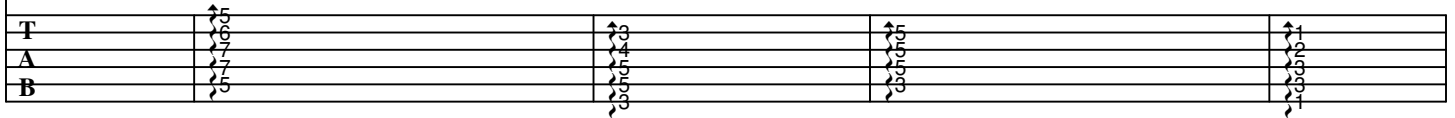
G C F



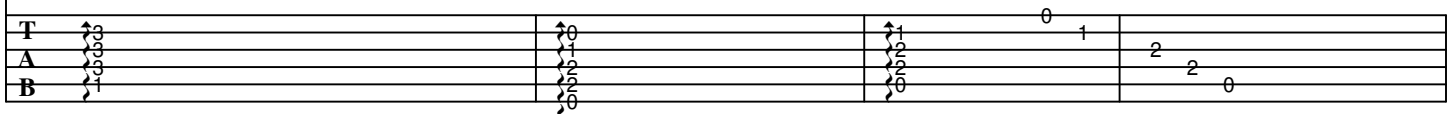
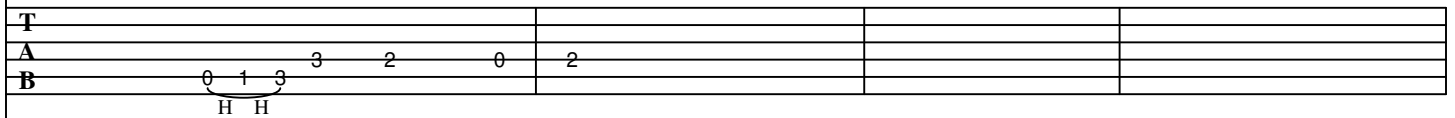
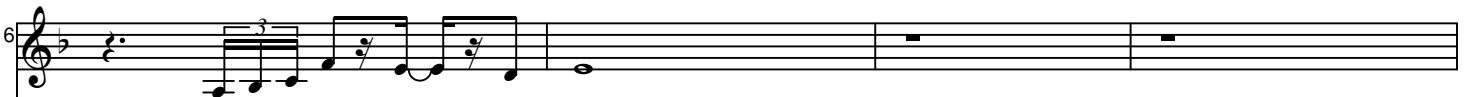
Gtr II



Gtr IV



Bb E Am



10

Dm G C F

T
A
B 0 5 7 7 5 8 5 0 3 5 5 3 2 3
H H H H

T
A 5 6 7 7
B 5

14

Bb E rit.

T
A
B 0 1 3 3 2 0 2 (2)
H H

T
A 5 5 6 6
B 5

B Pre-Verse

Faster ♩ = 124

17

Gtr II

T
A 2 2 x x 2 x x 2 x x 2 x x
B 0 x x 0 x x 0 x x 0 x x 0 x x

19

Gtrs I, II

P.M. -|

T											
A	0	2	2	0	2	2	0	2	2	0	0
B	0	x	x	0	x	x	0	x	x	0	0

C Verse

21

2

T											
A	4	4	4	4	4	4	2	2	4	4	0
B	2	2	2	2	2	2	2	2	2	2	0

23

P.M. -----|

T											
A	0	0	7	7	7	7	5	4	4	2	2
B	0	0	7	7	7	5	2	2	4	5	2

25

T											
A	4	4	4	4	4	2	4	4	4	4	0
B	2	2	2	2	2	2	2	2	2	2	0

27

P.M. -----|

T											
A	0	0	7	7	7	5	4	4	2	2	2
B	0	0	7	7	7	5	2	2	4	5	2

D Pre-Chorus

29

Gtr I

T
A
B

Gtr II

P.M.-|

T
A
B

sl.

32

T
A
B

P.M.-|

T
A
B

sl.

35

P.M.-----|

T
A
B

T
A
B

E Chorus

Gtr *mf* **SS**

⑤5fr. ⑥3fr. ⑤3fr.

38

Gtr II

T
A
B

⑥1fr. ⑤1fr. ⑥open

41

T
A
B

44

Gtrs I, II *f*

P.M.--| P.M.--| P.M.--| P.M.--|

T
A
B

sl. 14 sl.

46

Gtr II P.M. P.M. P.M. P.M. P.M.

T		5	6	7		5	5	5	5
A	7	7	7			5	5	5	5
B	5					3	3	3	3

Gtr I P.M. P.M. P.M. P.M. P.M. P.M. P.M. P.M. P.M. P.M. P.M. P.M.

T												
A	7	5	5	7	5	5	7	5	5	7	5	5
B	5											

49

P.M. P.M. P.M. P.M. P.M. P.M. P.M. P.M.

T					3	3	3				
A	3	3	3	3	3	3	3	3	3	3	3
B	1	1	1	1	1	1	1	1	1	1	1

P.M. P.M. P.M. P.M. P.M. P.M. P.M. P.M. P.M. P.M. P.M. P.M.

T												
A	3	3	3	3	3	3	3	3	3	3	3	3
B	1	1	1	1	1	1	1	1	1	1	1	1

D.S.

52

Gtrs I, II P.M. P.M. P.M. P.M. P.M.

T												
A	0	0	0	0	5	0	0	0	0	7	0	0
B	0	0	0	0	3	0	0	0	0	5	0	0

F Guitar Break

54

Dm G C

Gtr V

Gtr I

Gtr II

T A B

0 5 7 7 5 8 5 0 3 5 5 3 2

H H H H

T A B

7 7-9 10 8 10 7 7 5-7 8 10 9

sl. sl.

(2nd time on D.S.S.) To Dbl. Coda

57

F Bb E

T A B

3 0 1 3 3 2 0 2

H H

T A B

10 7 8 10 10 9 7 9

H H

60

1.

Gtrs I, II

P.M.-----| P.M.-----| P.M.-----| P.M.-----| P.M.-----|

T A B

0 0 0 0 5 0 0 0 0 7 0 0 0 0 5 0 0 0 0 7 0 0 0 5 2 0

3 5 3 5 3 0

G Breakdown

2.

62

P.M.----| P.M. P.M. P.M.----| P.M.----| P.M.----| P.M. P.M.

T
A
B

64

P.M.----| P.M. P.M. P.M.----| P.M.----| P.M.----| P.M. P.M.

T
A
B

H Guitar Solo

66

Gtr III

1

sl. sl.sl. H P sl.

Gtrs I, II *mf* P.M.----| P.M. P.M. P.M.----| P.M.----| P.M. P.M.

T
A
B

68

1 4

T
A 9 (9) 11 12 9 10 9 (9) (9) 10 9 10 9 7 9 7
B sl. H H sl. H P

P.M.----| P.M. P.M. P.M.-| P.M.----| P.M. P.M.

T
A 9 10 7 10 9 9 14 13 10
B 7 0 0 0 8 0 5 0 8 7 0 0 0 12 0 11 0 8

70

T 7 9 9 10 10 12 (12) 9 10 (10) 7 9 9 10
A 7 9 9 10 10 12 (12) 9 10 (10) 7 9 9 10
B sl. sl.

P.M.----| P.M. P.M. P.M.-| P.M.----| P.M. P.M.

T
A 9 10 7 10 9 9 12 10 12
B 7 0 0 0 8 0 5 0 8 7 0 0 0 10 0 8 0 10

72

T 7 9 10 10 12 13 15
A 7 9 10 10 12 13 15
B sl. sl. sl.

P.M.----| P.M. P.M. P.M.-| P.M.----| P.M. P.M.

T
A 9 10 7 10 9 9 14 13 10
B 7 0 0 0 8 0 5 0 8 7 0 0 0 12 0 11 0 8

74

T
A 14 15 14 12 15 14 14 12 14 15 14
B

P P

P.M.-----| P.M. P.M. P.M.-----| P.M. P.M.

T
A 9 10 7 10 9 12 10 12
B 7 0 0 0 8 0 5 0 8 7 0 0 0 10 0 8 0 10

76

T 15 14 15 18 15 17 15 18 17 18 17 18 17 21 21 21 17 21 17
A
B

H sl. P T P T P

P.M.-----| P.M. P.M. P.M.-----| P.M. P.M.

T
A 9 10 7 10 9 14 13 10
B 7 0 0 0 8 0 5 0 8 7 0 0 0 12 0 11 0 8

78

17 18 17 18 (10) 15 14 (14)

sl.

P.M.-----| P.M. P.M. P.M.-----| P.M. P.M.

T									
A	9	10	7	10	9	12	10	12	
B	7	8	5	8	7	10	8	10	10
	0	0	0	0	0	0	0	0	0

80

9 12 9 10 12 10 11 10 12 10 9 12 10 13 12 10 10 12 9 10 12 10 11 10 12

P.M.-----| P.M. P.M. P.M.-----| P.M. P.M.

T									
A	9	10	7	10	9	14	13	14	
B	7	8	5	8	7	12	11	12	12
	0	0	0	0	0	0	0	0	0

I Interlude

Bm
Gtr V

82

Gtr I *f*

T									
A	9	12	11	12	9	(9)	12	11	(11)
B							12	9	11

1/2

A

Gtr II *f*

T									
A	7	7	10	7	7	(7)	7	9	(9)
B							6	7	9

Full

G

86

Gtr I *f*

T									
A	12	11	12	9	(9)	12	11	(11)	12
B							12	9	11

1/2

A

Gtr II *f*

T									
A	7	10	7	7	(7)	7	9	(9)	6
B							7	9	7

Full

90

Bm A

T
A
B

12 11 12 9 (9) 12 11 (11) 12 9 11 1/2 (11) 12 9

T
A
B

7 10 7 7 (7) 7 9 (9) 6 7 9 Full (9) 7 7

94

G A

T
A
B

12 11 12 9 (9) 12 11 (11) 12 9 11 1/2 (11) 12 9

T
A
B

7 10 7 7 (7) 7 9 (9) 6 7 9 Full (9) 7 7

J Bridge

98

Bm A

T
A
B

12 11 12 9 (9) 12 11 (11) 12 9 11 (11) 12 9

7 10 7 7 (7) 7 9 (9) 6 7 9 (9) 7 7

102

1.
G A

T
A
B

12 11 12 9 (9) 12 11 (11) 12 9 11 (11) 12 9

7 10 7 7 (7) 7 9 (9) 6 7 9 (9) 7 7

106

G A

T
A
B

12 11 12 9 (9) 12 11 (11) 12 9 11

1/2

T
A
B

7 10 7 7 (7) 7 9 (9) 6 7 9

Full

D.S.S. al Dbl. Coda

109

T
A
B

(11) 12 12 (12) 14 14 (14) 16 16

sl. sl. *sl. sl.* *sl. sl.*

T
A
B

(9) 11 11 (11) 12 12 (12) 14 14

sl. sl. *sl. sl.* *sl. sl.*

K Outro

111

Gtrs I, II P.M.-----| P.M. P.M. P.M.-|

T
A
B

9 10 7 10 9 9

7 0 0 0 8 0 5 0 8 7 0 0

sl.