

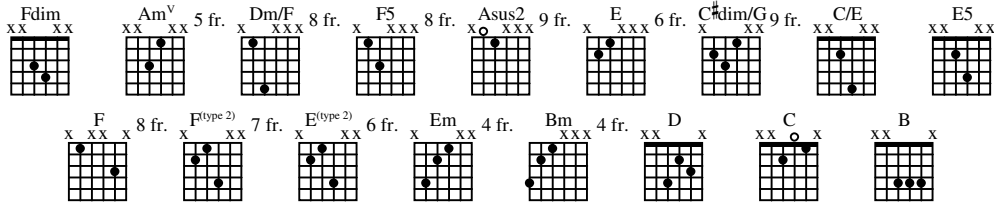
PUSTOSH' SMAUGA

As recorded by Epidemia

(From the 2021 Album PRIZRAKI I TENI)

Transcribed by Little Prince

Words by Dmitriy Protzko & Yuriy Melisov
Music by Dmitriy Protzko



A Intro

Tune to Eb

Gtr V Moderately $\text{♩} = 120$
(synthesizer arranged for gtr)
⑥open

1

Gtr I *let ring*-----|

T
A
B
5 4 5 4 5 4 5 4 5 4 5 7 0 5 4 5 4 5 7

P H P H P

Gtr II N.H.-----|

T [12] [5] [5]

A [5]

B

4

The image shows a musical score for guitar, divided into two systems. The first system features a melodic line in the treble clef with a key signature of one sharp (F#) and a 4/4 time signature. The melody consists of eighth and quarter notes, with two triplet markings. Below the staff is a guitar tablature with fret numbers (0, 5, 4, 4, 5, 4, 5, 4, 5, 4, 5, 4, 5, 4, 5, 7) and techniques labeled 'H' (harmonic) and 'P' (palm mute). A 'let ring' instruction is present. The second system includes a melodic line with a 'N.H.' (natural harmonics) instruction, a guitar tablature with fret numbers [5], [12], and [5], and a synthesizer part labeled 'Gtr IV (synthesizer arranged for gtr)' with fret numbers 17, 15, 17, 19, 17, 15, 14, 15, 17, 15, 17, 19, 17, 15, 14, 15, 16, 17, 16, 17, 15, 16.

let ring

T
A
B

5 4 4 5 4 5 4 5 4 5 4 5 4 5 4 5 7
H P 0 H P 7 0 H P 0 H P 7

N.H.

T
A
B

[5] [12] [5] [5]

Gtr IV (synthesizer arranged for gtr)

let ring

T
A
B

17 15 17 19 17 15 14 15 17 15 17 19 17 15 14 15 16 17 16 17 15 16

B Verse 1

6

6 open 6 3fr. 6 8fr. 6 7fr.

let ring-----|

T
A 5 4 4 5 4 5 4 5 4 5 4 5 4 5 4 5 4 5
B 0 H P 0 H P 7 0 H P 0 H P 7

N.H.-----| N.H.-----|

T [5] [12] [5] [5]
A [5] [12] [5] [5]
B [5] [12] [5] [5]

let ring-----|

T 17 15 17 19 17 15 14 17 15 17 19 17 15 14 15
A 16 16 16 16 16 16 16 16 16 16 16 16 16 16 16
B 16 16 16 16 16 16 16 16 16 16 16 16 16 16 16

Detailed description: This block contains the musical notation for Verse 1 of the song 'Epidemia' by Pustosh' Smauga. It begins with a section marked 'B' containing four tablature diagrams for fretting at the 6th fret, labeled 'open', '3fr.', '8fr.', and '7fr.'. The main melody is written in a treble clef with a key signature of one sharp (F#). It features eighth-note runs with triplets. The guitar part is shown with a tablature system below the staff, using numbers 0-7 and fret bends (H and P). This is followed by a section marked 'N.H.' (Natural Harmonic) with two diagrams. Below the guitar part, there is a bass clef section with two tablature systems. The first system has fret numbers 5, 12, 5, 5 for Treble, 5, 12, 5, 5 for Alto, and 5, 12, 5, 5 for Bass. The second system has fret numbers 17, 15, 17, 19, 17, 15, 14, 17, 15, 17, 19, 17, 15, 14, 15 for Treble; 16, 16, 16, 16, 16, 16, 16, 16, 16, 16, 16, 16, 16, 16, 16 for Alto; and 16, 16, 16, 16, 16, 16, 16, 16, 16, 16, 16, 16, 16, 16, 16 for Bass. The word 'let ring' is written below the first two systems.

5 7fr. 5 10fr. 6 8fr. 6 7fr.

let ring

T											
A	5	4	4	5	4	5	4	5	4	5	4
B	0										

H P 0 H P 7 0 H P 0 H P 7

N.H.

T											
A	[5]							[12]	[5]	[5]	
B											

let ring

T	17	15	17	19	17	15	14	17	15	17	19	17	15	14	17	15	16
A	16							16							16		16
B																	

⑥5fr. ⑥8fr. ⑤7fr. ④7fr.

10

let ring

T
A
B

5 2 0 4 2 0 5 2 0 3 5 4 5 2 0 4 2 0 5 2 0 3 5 4

0 2 0 2 0 2 0 0 2 0 2 0 2 0

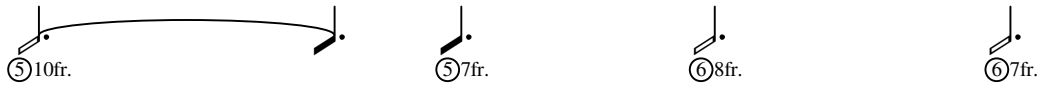
H H

let ring

T
A
B

20 17 20 19 17 19 20 17 20 22 20 19 20 17 20 19 17 19 20 17 20 22 20 19

C Verse 2



Musical staff with treble clef, key signature of one sharp (F#), and a 12-measure melodic line. The melody consists of eighth and quarter notes, with triplets in measures 4 and 8. A dashed line below the staff indicates a 'let ring' instruction.

TAB section for the first system, showing strings T, A, and B. Fingering numbers 0-5 are provided for each string. The strings are muted (H) and picked (P) in a specific sequence.

T											
A	5	4	4	5	4	5	4	5	4	5	4
B	0										
		H	P			H	P			H	P

Musical staff with treble clef, key signature of one sharp (F#), and a 12-measure melodic line. The melody is mostly rests, with a few notes in the final measures. A dashed line below the staff indicates a 'let ring' instruction.

TAB section for the second system, showing strings T, A, and B. Fingering numbers [12] and [5] are provided for the strings.

T											
A											
B											

Musical staff with treble clef, key signature of one sharp (F#), and a 12-measure melodic line. The melody consists of eighth and quarter notes, with triplets in measures 4 and 8. A dashed line below the staff indicates a 'let ring' instruction.

TAB section for the third system, showing strings T, A, and B. Fingering numbers 15, 16, 17, 19 are provided for each string. The strings are muted (H) and picked (P) in a specific sequence.

T	17	15	17	19	17	15	14	15	16	17	15	17	19	17	15	14	15	16
A	16									16								16
B																		

⑥ open ⑥ 3fr. ⑥ 8fr. ⑥ 7fr.

14

let ring-----|

T									
A	5	4	4	5	4	5	4	5	4
B	0							5	7
		H	P			H	P		

N.H.-----| N.H.-----|

T								
A	[5]					[12]	[5]	[5]
B								

let ring-----|

T	17	15	17	19	17	15	14	15	16	17	15	17	19	17	15	14	15	16
A	16							16		16								16
B																		

⑥5fr. ⑥8fr. ⑤7fr. ④7fr.

16

let ring

T	5	4	5	3	5	4	5	2	4	2	5	3	5	4	
A	0	2	0	2	0	2	0	0	2	0	2	0	0	2	0
B	0	0	0	0	0	0	0	0	0	0	0	0	0	0	0

H H

let ring

T	20	17	20	19	17	19	20	17	20	22	20	19	20	17	20	19	17	19	17	12	10	12
A																						
B																						

Fdim
mp

Am^v

⑤7fr.

18

Gtrs I, IV
let ring

T	6	7	8	7	8	5	0	7	0	7	8	7	5	0	7	5	7	5	7	5	0
A	5	7	7	7	8																
B	5																				

sl. sl. sl.

Dm/F **F5** **Asus2** **E(type 2)**

20

let ring

T 6 7 8 7 8 5 6 7 6 7

A 7 7 7 7 7 7

B 5 0 7 5 5 7 5 7 5 0 9 7 9 9 7 9 2 0

let ring

T 12 10 10 12 13 12 13

A 12 10 10 12 13

B sl. sl.

D Verse 3

(4)7fr. **(4)5fr.** **(3)5fr.** **(4)7fr.** **(4)5fr.**

23

Gtr I

let ring

T 1 2 1 2 1 0 1 0 1 0 2 3 0 1 0 1 3 3 5

A 0 3 3 3 3 sl.

T 2 0 2 0 5 6 3

A 2 0 2 0 5 6 3

B

C#dim/G
④8fr.
③6fr.
③9fr.
Dm/F
C/E

25

let ring

T	5	3	5	3	5	6	5	0	3	3	0	5	6	7	6	8	10	10	9	8	10	7
A																						
B	4						0							8	8		0	7	7			

sl.

E5
C#dim/G
②8fr.
③7fr.
③9fr.

27

let ring

T	7			5	4		6	5	6	5	7	5	8	8	10	10	11	10	8	10	8	7	9
A	0	6	7	6	5		0						5	6	5		0	0					
B						0																	

H P *sl.* H P

Gtr II
P.M.
P.M.
P.M.
P.M.

T	9	10	10	7	9	9	5	7	7	4	5	5	0	5
A														
B														

H H H H

Dm/F **F(type 2)** **E(type 2)**

29

let ring

T		10	10	8	10	12	8	10		8	7	7	7			2	0
A	10	8	8	10	8												
B	8	8	8							0							

P *sl.*

T	10	13	12	(12)
A				
B				

sl. *sl.* *sl.* *sl.*

E Interlude

31

let ring

T	1	0	1	2	1	2	0	1	0	0	0	0	2	0	2	2	0
A		2		2		2				2		2		2		2	
B	0				3					1				0			

Gtr V *mf*

T		10	12	13	10		
A		7	5		3	2	
B	7	5	3		1	0	

33

let ring

T	1	2	1	2	1	2	1	0	0	2	0	2	0	2	2	0
A																
B	0				3				1				0			

T	10	12	13	10	
A	7	7	5	3	2
B	7	5	3	1	0

Gtr VI (synthesizer arranged for gtr)

T	17	19
A		
B		

35

let ring-----

T	1	0	1	2	1	2	0	1	0	0	0	0	2	0	2	2	0
A		2		2		2				2			2				
B	0				3					1				0			

T		10	12	13	13	12
A		7	5		3	2
B	7	5	3	1		0

T	20	20	19	17	20	17	17	17	19
A									
B									

37

let ring

T	1	0	1	2	1	2	0	1	0	0	0	0	2	0	2	0
A		2		2		2				2			2		2	0
B	0				3				1			0				

T		10	12		13		12
A		7	9		10		9
B	7	5	3		1		0

Gtr V

39

let ring

T	1	0	1	2	1	2	0	1	0	0	0	0	2	0	2	2	0
A		2		2		2				2			2		2		0
B	0				3				1			0					

T	13		12	10	10	15
A	10		9	7	7	12
B	5		3	1		0

Gtr V

41

let ring-----|

T	1	2	0	1	2	1	2	0	1	0	0	2	0	2	0	2	0
A																	
B	0			3					1			0					

Gtr V

T	13		12	10	10	15
A	10		9	7	7	9
B	5		3	1	0	

43

let ring-----|

T	1	2	0	1	2	1	2	0	1	0	0	2	0	2	0	2	0
A																	
B	0			3					1			0					

Gtr V

T	12		15	15	13	12
A	9		12	12	10	9
B	5		3	1	0	

45

let ring

T 1 2 0 1 2 1 2 0 1 0 | 0 2 0 0 2 0 2 2 0

A 0 2 1 2 1 2 1 0 | 2 0 2 2 2 2 0

B 0 3 1 0

Gtr V

T 13 12 12 12 | 10

A 10 9 9 9 | 7

B 5 3 1 0

F Pre-Chorus

Gtr V *mp* Em

Bm

Em

Bm

47

Gtrs II, *mf*

P.M.

P.M.--|

P.M.--|

T | 9 | 7 9 4 4 4 | 9 0

A | 7 7 7 (9) 4 4 4 | 7 10 7 14 0

B | 7 7 7 (7) 2 2 2 | 7 10 7 14 0

sl.

sl.

Em

Bm

Em

Bm

49

P.M.

P.M.--|

P.M.--|

T | 9 | 7 9 4 4 4 | 9 0

A | 7 7 7 (9) 4 4 4 | 7 10 7 14 (14)

B | 7 7 7 (7) 2 2 2 | 7 10 7 14 (14)

sl.

sl.

sl.

D

C

51

P.M.



T | 2 | 2 |

A | 4 | 4 |

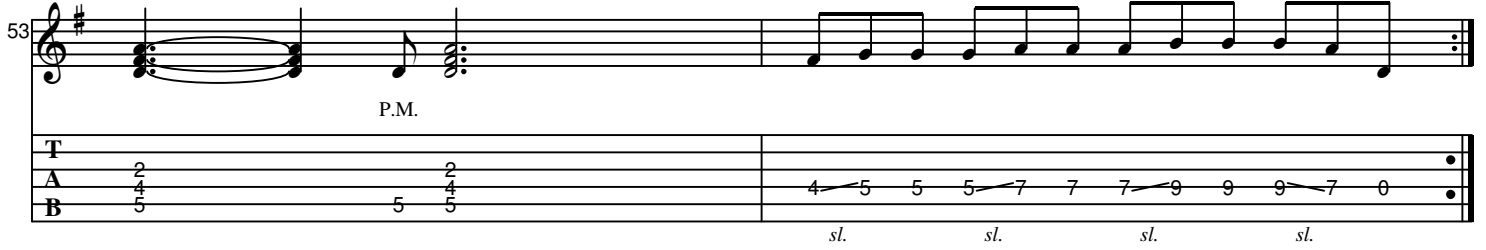
B | 5 | 5 |

sl.

sl.

D  **B** 

53




P.M.

T									
A	2			2					
B	5			5	5				

sl. *sl.* *sl.* *sl.*

G Chorus

55



Gtr V *mf*

T																			
A	9	7	5	4	9	7	5	4	9	8	7	9	8	7	5	3	2		
B	7	5	3	2	7	5	3	2	7	5	3	2	7	5	3	2			

59



T																			
A	9	8	7	7	9	9	8	9	10	7	10								
B	7	5	3	2	7	5	3	2	7	5	8								

H Guitar Solo

63

Gtr II *f*
Full Full Full

T 12 12 12 12 14 14 14 14 14 12 11 12 11 12 11 11 12 14 13 12 12 13 15
A 14
B 14

P H P sl P sl

Gtr II

T
A 9 7
B 7 5 5 4

65

sl. P H P sl. P sl. P sl.

T 17 17 17 17 15 17 17 15 17 15 17 15 19 17 (17) 0 11 8 10 11 14 11 13 16 14 17
A 17 17 17 17 15 17 17 15 17 15 17 15 19 17 (17) 0 11 8 10 11 14 11 13 16 14 17
B 17 17 17 17 15 17 17 15 17 15 17 15 19 17 (17) 0 11 8 10 11 14 11 13 16 14 17

T
A 9 7 4
B 7 5 3 2

67

Full Full

17 15 17 15 17 17 15 17 (17) 0

4 5 5 7 8 7 5 7 5 8 7 5 4 8 8 5 4 4 7 5 4

sl. H sl. P sl. sl. P P

T A B

9 7 9 5 9 5 4

69

~~~~~

12 12 12 9 9 9 12 12 12 8 8 8 5 5 0

10 10 10 7 7 7 9 9 9 5 5 5 2 2

sl. sl. sl. sl. sl.

T A B

9 7 9 5 9 5 4

**I** Out-Chorus

71

Ctrs II, III *mf*

|          |   |   |   |   |   |   |   |
|----------|---|---|---|---|---|---|---|
| <b>T</b> |   |   |   |   |   |   |   |
| <b>A</b> | 9 | 7 | 5 | 4 | 9 | 7 | 5 |
| <b>B</b> | 7 | 5 | 3 | 2 | 7 | 5 | 3 |

Gtr V

|          |   |   |   |   |   |   |   |
|----------|---|---|---|---|---|---|---|
| <b>T</b> |   |   |   |   |   |   |   |
| <b>A</b> | 9 | 7 | 9 | 8 | 8 | 7 | 9 |
| <b>B</b> | 7 | 5 | 3 | 2 | 7 | 5 | 3 |

Gtr VI

|          |    |      |      |      |    |    |      |      |      |    |    |      |      |      |    |    |      |      |      |    |
|----------|----|------|------|------|----|----|------|------|------|----|----|------|------|------|----|----|------|------|------|----|
| <b>T</b> | 12 | 1212 | 1210 | 1010 | 10 | 12 | 1212 | 1211 | 1111 | 11 | 12 | 1212 | 1210 | 1010 | 10 | 12 | 1212 | 1211 | 1111 | 11 |
| <b>A</b> |    |      |      |      |    |    |      |      |      |    |    |      |      |      |    |    |      |      |      |    |
| <b>B</b> |    |      |      |      |    |    |      |      |      |    |    |      |      |      |    |    |      |      |      |    |

75

T  
A  
B

9 7 5 4 9 7 4

7 5 3 2 7 5 4

T  
A  
B

9 8 7 7 9 8 9 10 7 10

7 5 9 3 2 7 5 8

T  
A  
B

12 1212 1210 1010 10 12 1212 1211 1111 11 12 1212 1210 1010 10 13 1313 1313

12 12 12 12 12 13 13 12 12 12 12 12 12 13 13 13

**J** **Outro**  
Gtrs II, III

79

Gtr I  
*let ring*

T  
A  
B

1 2 0 1 2 1 0 1 0 1 0 2 3 0 1 0 1 3 3 5

0 3 2 2 2 1 1 1 3 3

*sl.*

81

*let ring*

T  
A  
B

5 3 5 3 5 6 5 0 3 3 0 5 6 7 6 8 10 10 9 8 10 7

4 0 8 8 0 7 7

*sl.*

83

let ring

|   |   |   |   |   |   |   |   |   |   |   |   |    |    |    |    |   |    |   |   |   |
|---|---|---|---|---|---|---|---|---|---|---|---|----|----|----|----|---|----|---|---|---|
| T | 7 | 5 | 4 | 6 | 5 | 6 | 5 | 7 | 5 | 8 | 8 | 10 | 10 | 11 | 10 | 8 | 10 | 8 | 7 | 9 |
| A | 0 | 6 | 7 | 6 | 5 | 0 | 0 | 0 | 0 | 5 | 6 | 5  | 0  | 0  | 0  | 0 | 0  | 0 | 0 | 0 |
| B |   |   |   |   |   |   |   |   |   |   |   |    |    |    |    |   |    |   |   |   |

H P sl H P

85

let ring

|   |    |   |   |    |    |   |    |    |    |    |    |   |    |    |   |    |   |   |   |   |
|---|----|---|---|----|----|---|----|----|----|----|----|---|----|----|---|----|---|---|---|---|
| T |    |   |   |    |    |   |    |    |    | 10 | 10 | 8 | 10 | 12 | 8 | 10 | 8 | 7 | 7 | 7 |
| A | 10 | 8 | 8 | 10 | 10 | 8 | 10 | 10 | 10 | 8  | 8  | 8 | 8  | 8  | 8 | 8  | 8 | 8 | 8 | 8 |
| B | 8  | 8 | 8 | 8  | 8  | 8 | 8  | 8  | 8  | 8  | 8  | 8 | 8  | 8  | 8 | 8  | 8 | 8 | 8 | 8 |

P sl